



MAGICAL UNICORN NEUE PRO

Since it's founding, Typearture has been at the forefront of unicorn-typography related developments: The Magical Unicorn typeface in 2012 preceded the unicorn emoji by some years, and in 2017 the Pegacorn Initials introduced high-definition pegacorns to the world. And now, using cutting edge font technology, Typearture will once again make a leap into the future with Magical Unicorn Neue Pro.

The phrase Less Design, More Unicorns makes a return, with a vengeance. No more will Unicorn typefaces be limited by their shape, or their character. Magical Unicorn Pro has its roots in the past, but this typeface has no time for reflections, and bolts towards the future at break-neck speed.

Building upon the original Magical Unicorn typeface, a typeface made specifically for those with a healthy interest into unicorns, gave a solid concept. Next to this, Magical Unicorn Pro could look towards the famed Pegacorn Initials for inspiration how to expand a set of characters.

The original Magical Unicorn font was, while usable, severely limited. To be able to truly claim the title of "magical", improvements would have to be made. The character set had to be expanded, and letters had to be drawn anew. Starting from scratch, the unicorns were drawn once more, but this time with solid, even strokes. Balancing where old characters were found to be lacking,

This new A to Z was just one part of the new typeface, next to this punctuation symbols, such as currency symbols and math symbols were added. These punctuation characters were shaped after stars, rainbows, glitter and clouds, splitting them visually from the Unicorn letters, enhancing legibility.

The broad character set of Magical Unicorn Neue Pro allows more languages to convey the magic of unicorns: The typeface even supports rare languages such as Onëipöt. And with the development of extended-Latin complete, the way is opened for Unicorn Cyrillic, Unicorn Greek and Unicorn Hebrew in the future.

Finally, the Unicorns were finished as a special color font, bringing a rainbow into your words for selected software. And fear not! As programs which don't support color fonts will use a line version instead. Magical Unicorn Neue Pro gives birth to a new standard of unicorn typefaces: All-usable, all-encompassing and in dazzling rich colors.



HOW TO USE MAGICAL UNICORN NEUE PRO

While most characters of the font are accessible using normal keyboard keys, there are certain characters which require a different way of adding them to your text. Below is a manual on how to access these characters using programs like InDesign, Word and Open Office.

**ADOBE CC**

Open the Type window **Type > Glyphs** to access the full character set. You can insert characters with a double-click.

For Photoshop, the window is accessible through **Type > Panels > Glyph Panel**

**MICROSOFT WORD**

Open the **Advanced Symbol** browser using **Insert > Symbol > Advanced Symbol**. Here you can select Magical Unicorn Neue Pro from the drop-down menu and scroll through the character list. You can insert characters with a double-click.

**PAGES**

The **Emoji & Symbols** window doesn't support many of the special characters available in Magical Unicorn Neue Pro. The best method of adding these special characters to your text is copying them from **Fontbook** as described in the next column.

**OPEN OFFICE**

Open the Special Character window using **Insert > Special Character** and select the Magical Unicorn Neue Pro font from the pull-down menu. In the special character window you can select multiple characters to insert them in your text at the same time.

**COPY FROM PDF**

With the fonts installed, you can also copy-paste characters directly from this PDF. Select the character using Adobe Acrobat and copy-paste the character into the program of your choice.

**OTHER METHODS**

Next to using the previous methods, all characters not accessible through the keyboard are accessible using the following:

**PC / MICROSOFT WINDOWS**

On a PC you can insert the characters using their Unicode (which is listed under each character not accessible through the keyboard in this manual). To use this code, type the character code on the numeric keypad, press **ALT**, then press **X**.

Otherwise you can add the characters using **character map**. This enables you to view and copy-paste characters into other programs. With **Character Map** open, you can select the font from the pull-down menu.

You can access the **Character Map** program through clicking **start > all programs > windows accessories > character map**. (In Windows versions before 10, the **Character Map** is accessible through **start > all programs > accessories > system tools > character map**.)

**MAC**

On a Mac you can access all characters using **Fontbook**, which you can find in the **Application Folder** (or through the **Finder**) With the font selected in font-book, you can copy-paste any character from the list into your document.

For this to work, you will have to install the font through Fontbook and not a 3rd party font manager.





CHARACTER SET





Character: A/a



Character: B/b



Character: C/c



Character: D/d



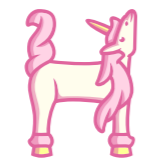
Character: E/e



Character: F/f



Character: G/g



Character: H/h



Character: I/i



Character: J/j



Character: K/k



Character: L/l



Character: M/m



Character: N/n



Character: O/o



Character: P/p



Character: Q/q



Character: R/r



Character: S/s



Character: T/t



Character: U/u



Character: V/v



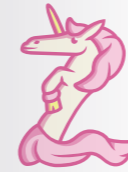
Character: W/w



Character: X/x



Character: Y/y



Character: Z/z



Character: 1



Character: 2



Character: 3



Character: 4



Character: 5



Character: 6



Character: 7



Character: 8



Character: 9



Character: O



Character: !



Character: ?



Character: ?



Character: @



Character: \$



Character: €



Character: €



Character: £



Character: ¥



Character: ¢



Character: &



Unicode: §



Character: (/[



Character: )/]



Character: /



Character: \



Character: <



Character: >



Character: {



Character: }



Character: +



Character: ±



Character: ÷



Character: =



Character: x



Character: %



Character: ‰



Character: ,



Character: .



Character: ...



Character: :



Character: ,



Character: ;



Character: #



Character: \*



Character: °



Character: °



Character: \*



Character: °



Character: \_



Character: —



Character: -



Character: |



Character: †



Character: ‡



Character: ∞



Character: «



Character: »



Character: <



Character: >



Character: ™



Character: ~



Character: -



Character: `



Character: ´



Character: ^



Character: °



Character: ˘



Character: ˙



Character: ˘



Character: ˘



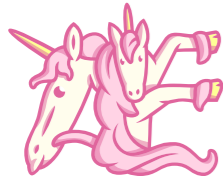
Character: ˘



Character: ˘



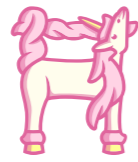
Character: ˘



Character: Æ



Character: Ð



Character: H



Character: Ł



Character: N



Character: Œ



Character: Ø

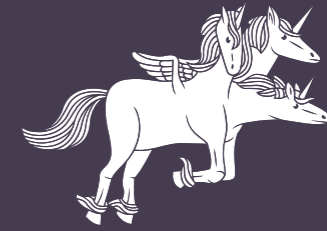
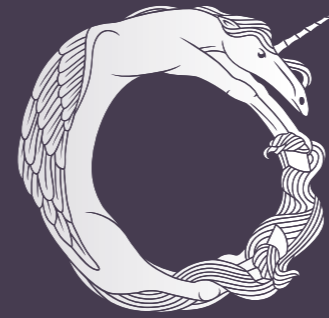


Character: Þ



Character: F

DISCOVER OTHER TYPEARTURE TYPEFACES



PEGACORN INITIALS

beautiful

shinning

gemstones



SCHIJN

---

**MAGICAL UNICORN NEUE PRO** BY TYPEARTURE

[WWW.TYPEARTURE.COM](http://WWW.TYPEARTURE.COM)

[MAIL@TYPEARTURE.COM](mailto:MAIL@TYPEARTURE.COM)

---